

CLENAWARE 

S Y S T E M S

ware excellence is standard



# Product Information

## Basket Units

MADE IN BRITAIN 



## Product Overview & Key Features

Storing glasses and crockery correctly will prevent the re-introduction of cross-contamination or dampness to your freshly washed wares. Basket units are an ideal addition to the ware washing process, as glasses and crockery can be stored in the unit safely and securely by using the correct style and size of basket or rack. Storing a basket or rack into a basket unit, results in no cross-contamination and good ventilation during storage.

Clenaware Basket Units are available as 3 or 5 tier high, and as a static or mobile solution. A static unit has adjustable feet and slides easily into a spare space in the bar or kitchen area. Ideally, the unit would be placed next to the ware washer and sink unit. The mobile solution is designed for easy movement as they have four castors, two of which are braked for safety once the unit is in position for storage and also gives easier access for cleaning.

All of the Clenaware Basket Units are made from durable stainless steel, making them not only a hygienic, easy to maintain piece of equipment, but also 'aesthetically' pleasing as stainless steel is resistant to corrosion and staining from water and other contaminants. Each basket unit also comes with its own catch trays supplied as standard.

### Static Units

Static Units can slide easily into spare space in the bar or kitchen area. Ideally, the unit would be located next to the ware washer. Static units have adjustable feet, making it possible to allow a sturdy, safe storage solution even on an uneven floor space.

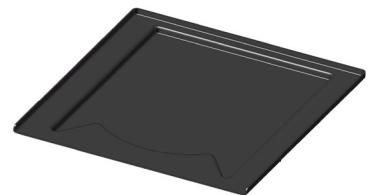


### Mobile Units

Mobile Basket Units are designed for easy movement. They come with four castors, two of which are braked for safety once the unit is in position for storage. Having a mobile unit also allows for easier access when cleaning or carrying out maintenance.

### Durable

The Basket Units are made of stainless steel and not only look modern, but are also able to handle the knocks and bumps of a busy bar or kitchen area. The catch trays supplied with each unit as standard, are of a high-quality finish.



### Versatile

Clenaware Basket Units are available in various sizes and in either 3 or 5 tiers, allowing you to store all basket types. They are suitable for a standard open basket for storing pint glasses etc and even accommodate the tall glass basket which stores all of your Continental style glasses that measure over 15cm in height.



Technical Specifications  
Static Units



	3 Tier Static Basket Units - 40	3 Tier Static Basket Units - 45	3 Tier Static Basket Units - 50
Dimensions (mm):	W470 x H750 x D400	W520 x H750 x D450	W570 x H750 x D500
Finish:	Stainless Steel - 304	Stainless Steel - 304	Stainless Steel - 304
Basket / Rack Size:	400mm	450mm	500mm



	5 Tier Static Basket Units - 40	5 Tier Static Basket Units - 45	5 Tier Static Basket Units - 50
Dimensions (mm):	W470 x H1400 x D400	W520 x H1400 x D450	W570 x H1400 x D500
Finish:	Stainless Steel - 304	Stainless Steel - 304	Stainless Steel - 304
Basket / Rack Size:	400mm	450mm	500mm



Technical Specifications  
Mobile Units



	3 Tier Mobile Basket Units - 40	3 Tier Mobile Basket Units - 45	3 Tier Mobile Basket Units - 50
Dimensions (mm):	W470 x H800 x D400	W520 x H800 x D450	W570 x H800 x D500
Finish:	Stainless Steel - 304	Stainless Steel - 304	Stainless Steel - 304
Basket / Rack Size:	400mm	450mm	500mm



	5 Tier Mobile Basket Units - 40	5 Tier Mobile Basket Units - 45	5 Tier Mobile Basket Units - 50
Dimensions (mm):	W470 x H1450 x D400	W520 x H1450 x D450	W570 x H1450 x D500
Finish:	Stainless Steel - 304	Stainless Steel - 304	Stainless Steel - 304
Basket / Rack Size:	400mm	450mm	500mm



## **Clenaware Systems Ltd**

44 Huxley Close, Park Farm Industrial Estate, Wellingborough. Northants. NN8 6AB

**Telephone:** 01933 666244 **Fax:** 01933 665584

**Email:** [info@clenaware.co.uk](mailto:info@clenaware.co.uk) **Web:** [www.clenaware.co.uk](http://www.clenaware.co.uk)