



# Product Information

Jubilee 50



## Product Overview & Key Features

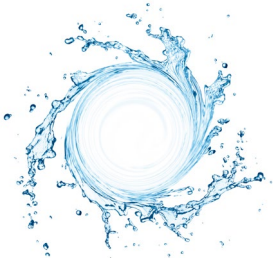
For over 50 years, Clenaware has been providing customers with the ultimate in warewashing equipment, and the Jubilee 50 is the newest addition to the Clenaware warewashing family.

The Jubilee 50 is an under-counter front loading machine, so there is no complicated rack or heavy hood system to manoeuvre, making the Jubilee 50 ideal for use in Bistros, Cafes and Restaurants.

Like all of the other warewashers available in the Clenaware range, the Jubilee 50 is a 'Fresh Water Wash' machine and is WRAS approved.

### Three Wash Cycles

The Jubilee 50 Dishwasher offers three wash cycles for the best washing results. A Light, Medium and Heavy Soiled Cycle can be chosen to ensure that the right wash is used each time. No matter which cycle is selected, every cycle uses fresh water for its wash; this means the same consistent cleaning results are delivered every time.

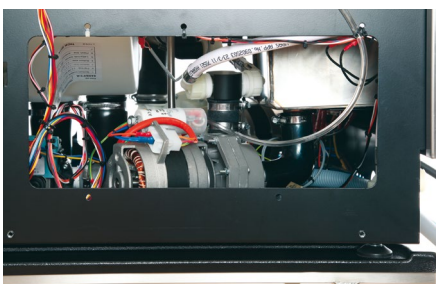
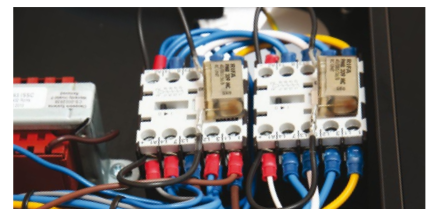


### Fresh Water Wash

Unlike other machines that reuse the wash water, the Jubilee Dishwasher is a "Fresh Water Wash" machine which always ensures the last wash is the same as the first. The "Fresh Water Wash" system replaces the wash water after every wash, and what's more, the rinse water is always fresh to ensure that you obtain the same consistent "Perfect" result every time.

### Flexible Electrical & Water Installation

The Jubilee 50 Dishwasher offers a flexible connection meaning it can run as a 30 Amp or 3 phase connection. The Jubilee 50 Dishwasher also offers flexible water connection, in that it can be run from a Hot or Cold water supply (Gravity or Mains).



### Intergrated Design

The Jubilee 50 Dishwasher is a fully integrated machine, which comes fitted as standard with a rinse pump; wash pump and waste pump system. With other manufacturers, these are optional extras which can cost you hundreds of pounds on top of the cost of a machine. With its self-diagnostic system, the Jubilee 50 will let you know whenever there's a problem with its day-to-day running and diagnoses issues early, to help you avoid any unnecessary call outs for breakdown and repair.



## Technical Specifications



	Jubilee 50 30 Amp	Jubilee 50 3 Phase
Machine Type:	Cabinet	Cabinet
Dimensions (mm):	W605 x H840 x D650	W605 x H840 x D650
Electrical:	Single Phase 30 Amp	Three Phase
Water:	Hot or Cold (Gravity or Mains)	Hot or Cold (Gravity or Mains)
Machine Finish:	Brushed Stainless Steel - 304	Brushed Stainless Steel - 304
Double Skinned:	Yes	Yes
Basket / Rack Size:	500mm sq	500mm sq
Basket / Rack Per Hour:	Up to 30	Up to 30
Basket / Rack Capacity:	16 Dishes - 30 Cups	16 Dishes - 30 Cups
Fresh Water Wash:	Yes	Yes
Standard Cycle Time:	2, 3 & 4* Minutes	2, 3 & 4* Minutes
Renovate Cycle:	No	No

\*Cycle time is dependant on water supply

Technical Specifications continued on next page.



## Technical Specifications Continued



	Jubilee 50 30 Amp	Jubilee 50 3 Phase
Polycarbonate Cycle:	No	No
Closedown Cycle:	Yes	Yes
Break Tank:	Yes	Yes
WRAS Approved:	Yes	Yes
Water per Cycle (litres):	6.5	6.5
Rinse Booster Pump:	Yes	Yes
Pumped Waste:	Yes	Yes
Chemical Injection:	Peristaltic (Adjustable)	Peristaltic (Adjustable)
Chemical Sensing / Priming:	Yes	Yes
Soft Touch Controls:	Yes	Yes
Self Diagnostics:	Yes	Yes
Manufactured to ISO 9001 : 2008:	Yes	Yes



## Installation Requirements

### Siting

Positioning should be on a sound level surface with adequate clearance for servicing.

### Electrical

30 Amp Machine: Supplied for a single phase 230-240v 50Hz operation, fitted with a 4mm<sup>2</sup> 3-core H07-RNF Mains cable. Fused @ 25 Amps.

13 Amp Machine (de-rated): Suitable for single phase 230-240v 50Hz operation, fitted with a 1.5mm<sup>2</sup> 3-core H07-RNF mains cable. Fuse @ 13 Amps.

3-phase Machine: Supplied for three phase 400-415v (3Ph + N) 50Hz operation, fitted with a 2.5mm<sup>2</sup> five core H07-RNF mains cable. Fuse @ 15 Amps per phase.

The isolating switch must be positioned within one metre of the machine and be accessible.

### Water

A hot or cold single water supply is required, although a hot supply is recommended.

Hot water must not exceed 60°C and be 0.5 – 1.5 Bar @ 5lt/min

Or

Cold water must be a minimum of 5°C and be 0.5 – 10 Bar @ 5lt/min

The water supply must terminate with an easily accessible ¾" BSP Bib Tap within one metre of the machine.

### Waste

The machine has a pumped waste system which requires a trapped open-vent up-stand, a minimum of 450mm from the base of the machine. If the machine is on a stand then the up-stand will need to be higher. The up-stand should be 1 ½" in diameter, and the outlet hose is inserted no more than 100mm to avoid siphoning.

### Chemicals

Good quality chemicals should be used.

Chemicals are injected from external 5lt Detergent and Rinse-aid bottles via the chemical suction tubes.

### Water Treatment

For hard water supplies, the use of an automatic water softener is strongly recommended.

**Failure to comply with the installation requirements, cleaning procedures, or using the machine for purposes other than designed for, may invalidate the warranty.**

# CLENAWARE

S Y S T E M S

ware excellence is standard



## Clenaware Systems Ltd

44 Huxley Close, Park Farm Industrial Estate, Wellingborough. Northants. NN8 6AB

**Telephone:** 01933 666244 **Fax:** 01933 665584

**Email:** [info@clenaware.co.uk](mailto:info@clenaware.co.uk) **Web:** [www.clenaware.co.uk](http://www.clenaware.co.uk)

**MADE IN BRITAIN** 