

# Glastender.

A Family Company  
Manufacturing in the USA

STUDIOBAR

125C GF East Ave. Shahpur Jat

New Delhi 110049

+91 11 41550060, 0443

[united@longdraught.com](mailto:united@longdraught.com)

[Longdraught.com](http://Longdraught.com)

## Space-Maximizing Refrigeration

Expect more  
more flexibility  
more features

# An all-new, space-maximizing refrigeration platform

Glastender's new line of space-maximizing coolers and frosters offer increased capacity and functionality not normally found in a compact footprint.

## C1SB Coolers

**One-zone, side-serviced, bar-profile**

- Listed to NSF Standard 7 for open food storage
- Available in 24" or 28" one-door units and 36", 44" or 48" two-door units
- Beer, white wine or red wine temperatures
- Left or right compressor compartment location
- Doors and drawers in a variety of finishes
- Shelf storage or draft beverage dispensing
- Unfinished, stainless steel, or laminated top
- Bright white, warm white, amber, or blue LED lighting



C1SB24

## C1SL Coolers

**One-zone, side-serviced, low-profile**

- 6" shorter overall height than bar-profile units
- All features and options of the C1SB coolers, except draft beverage dispensing



C1SU24



C1SL24

## C1SU Coolers

**One-zone, side-serviced, undercounter profile**

- 24-1/8" deep stainless steel finished top
- Stainless steel pull tab handle
- 110° hinges
- Casters or legs included
- All other features and options of the C1SL coolers



C2SB48

## C2SB Coolers

**Two-zone, side-serviced, bar-profile**

- Listed to NSF Standard 7 for closed container products
- Two door units available in 36", 44" or 48" widths
- Two thermostatically controlled temperature zones for beer, white, or red wine
- 4" wide insulated wall between zones provides true thermal-break to ensure consistent temperatures
- All other features and options of the C1SB coolers

## Incredible versatility in a compact footprint



Four rows of pint glasses



Drawers



Three rows of long-neck bottles



Open food listed



Full-height keg dispensing

## F1SB and F1SL Frosters

### One-zone, side-serviced, bar-profile and low-profile

- Listed to NSF Standard 7 for closed container products
- Wide operating range of 12°F (-11°C) to 35°F (2°C) for frosting or chilling
- All features and options of the C1SB or C1SL coolers, except draft beverage dispensing and drawers



F1SB24



F1SL24

## Front-serviced vs. side-serviced

Glastender has two different refrigeration platforms – front-serviced and side-serviced. Both are front venting, while front-serviced units are serviced from the front and side-serviced units are serviced from the side. Side-serviced units provide more capacity in a smaller footprint, but should not be used in cases where the unit is immovable after installation.



Side-serviced model showing side access to condensing unit (side panel removed for illustrative purposes)



Side-serviced model showing interior access to evaporator housing (door removed for illustrative purposes)

# Glastender

A Family Company  
Manufacturing in the USA



Expect more  
*more flexibility*  
more features

**Bar Refrigeration**

# Your one - stop bar refrigeration shop



Lighted liquor displays designed for use with glass ice display units have a front light channel to illuminate the ice bath (field installed glass ice display unit shown).

Matching dry storage cabinets offer attractive and convenient storage for dry goods.



The special stainless steel top on the margarita machine stand has a 1" high drip-proof edge on the back and sides with radius corners for easy cleaning. The cabinet base provides additional dry storage.

Available without finished top for integrated installation below customer supplied bar top (as shown below).



Back bar coolers are available with up to four doors and as self-contained or remote refrigerated (two-door self-contained model shown).

Reach-in mug frosters make it easier to frost diverse glassware and rotate glass inventory while matching the look of back bar coolers.

Back bar coolers can be easily converted to draft beer dispensing.



Back bar liquor display includes interior light to enhance product merchandising. The stainless steel steps have ABS plastic sound deadening covers and radius corners for easy cleaning.

Back bar glass storage unit provides extra glass storage while maintaining the back bar profile. Adjustable shelves have radius corners for easy cleaning.



# Unrivaled cooler features



Innovative end wall refrigeration design with evaporator located above compressor compartment frees up interior space for maximum storage capacity.

Recessed compressor compartment back and 90° electrical plug enables flush wall placement.

Easy to remove condenser filter can be regularly cleaned to maintain condenser coil efficiency.



Glastender top shelf cross section



Top shelf cross section of typical industry design

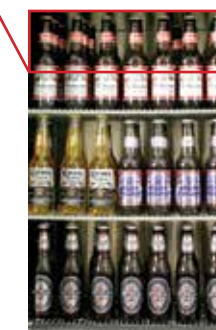
Edge cap on laminated doors and compressor compartment covers protects laminate from chipping.

Available without a finished top for integrated installation below customer supplied bar top (factory installed top shown).



Convenient full access to all three shelves to maximize efficiency - leading competitor design has obstructed access to top shelf.

Glastender design



Competitor design



All stainless steel interior with radius corners is easy to keep clean and meets NSF Standard 7 for open food containers on BB and ND models.

NOTE: Raised panel wood doors do not meet UL flammability test requirements. Coolers manufactured with raised panel wood doors do NOT carry the UL mark. Please verify acceptability with your local electrical inspector prior to ordering.

Nine door styles to satisfy diverse needs and decor (unlaminated not shown)



Stainless steel solid and glass

Black vinyl-clad solid and glass

Laminated solid and glass

Wood solid and glass

Optional leg sets employ a unique recessed cup design to enhance durability.



16 gauge galvanized steel interlocking multi-bend base provides incredible strength and rigidity.

ABS plastic threshold scuff plate protects lower door sill.



# Two Zone Coolers

# Lighted Liquor Displays

Two Zone Coolers allow you to store products at two different temperatures, saving money by getting one cooler to do the job of two. Back bar and narrow door two zone coolers are available with 2, 3, or 4 doors and in three configurable options: beer and white wine, beer and red wine, white wine and red wine. The warmer compartment is always a single door located opposite the compressor end.



BB60BW-LI-XS (LR)

Door opening allows convenient full access to all three rows of long neck beer bottles or two rows of wine bottles.

End wall refrigeration design with evaporator located above compressor compartment frees up interior space for maximum storage capacity.



Insulated wall between compartments provides a thermal break to ensure consistent temperature control.

Clearly visible digital thermostats independently control temperature within each compartment.

All stainless steel interior with radius corners for easy cleaning.



Dual blower motors provide the air flow necessary to ensure consistent temperature within the warmer compartment.



Glastender lighted liquor displays are a great way to highlight and merchandise your call brand liquor. Available in two or three step versions and in 6" incremental lengths from 24" up to 108".



Intertek  
Conforms to ANSI/UL  
STD 962  
Certified to CSA STD  
C22.2 No. 12



Access hole provides access to on/off switch.



Removable step cover for easy access to fluorescent light bulbs.



Durable black vinyl-clad exterior (stainless steel available by special order).



LLDS-30R



Power cord and on/off switch can be located on the left or right end to meet your installation requirements.

One-piece clear acrylic cover is easy to clean and protects internal components from spills. Units are certified to meet ANSI/UL 962 spill test requirements.



Lighted liquor displays have 4" high by 4" deep steps, except for the LLD models which have a 9-1/4" high first step.



LLDS

LLD3

LLD

The LLD models are designed for use in conjunction with Glastender glass ice display units. The LLD models have a front light channel to help illuminate the ice display.

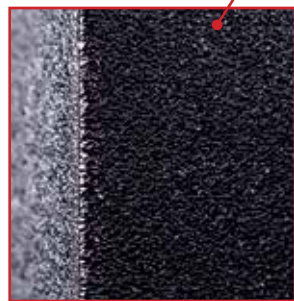
End views

# Ice Display and Glass Ice Display Units

Ice display units are a great way to merchandise beverages as well as add chilled storage capacity to your bar. They are available factory installed on Glastender back bar cabinets or for field installation. The 7" high stainless steel IDU models have a 6" deep liner and are available in 12", 18", or 24" depths and in 6" incremental sizes from 24" up to 108" in length.



IDU-18X30



Available by special order with durable black vinyl-clad exterior.

A stainless steel perforated bottom insert helps prevent bottle labels from clogging the drain.



1/4" radius interior corners for easy cleaning.



Foam-in-place insulation and ABS plastic breaker strip around ice bin liner unit acts as a thermal barrier to minimize condensation and maximize ice life.

The GDU model glass ice display units have glass front and back panels for increased product visibility. The four walls of the GDU sit inside an insulated stainless steel pan that captures the moisture from melting ice on the inside and any condensation on the outside. GDU models are available in 12", 16", 18", and 24" depths and in 6" incremental sizes from 24" up to 108" in length.



GDU-12X36

Double pane glass front and back panels with stainless steel trim for increased product visibility.

Stainless steel foamed-in-place insulated end panels (units larger than 54" include center partition).

Field installed units include a stainless steel foamed-in-place insulated drain pan to mount to existing counter top.

The four walls easily lift out of the pan for thorough cleaning.



Factory installed units include a special stainless steel foamed-in-place insulated cooler top with seamless-welded drain pan.



A stainless steel perforated bottom insert helps prevent bottle labels from clogging the drain.



# Keg Coolers

Manufactured with the same quality construction as our standard back bar coolers, Glastender keg coolers are specifically intended for keg dispensing and come standard with the features detailed here.



Surface mount drain pan includes seamless-integrated rear deck with drip edge to divert splashes around the beer tower column into the drain pan.

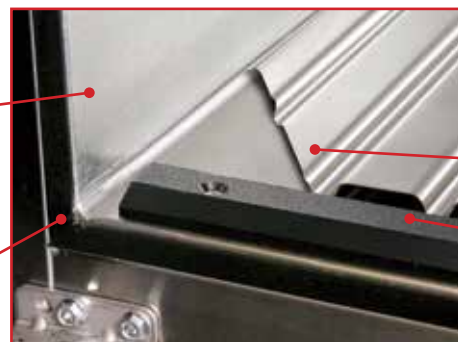
Pre-plumbed drain line exits below compressor compartment for convenient plumbing to nearest floor drain.



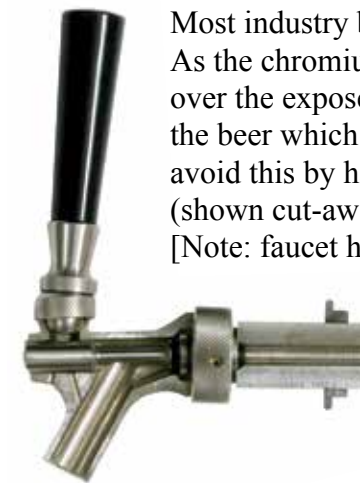
Hose from evaporator provides forced-air cooling of beer tower to minimize foaming issues.

Galvanized steel interior walls and ceiling with stainless steel floor to prevent rusting where moisture collects.

Radius interior corners for easy cleaning.



Includes stainless steel keg rack (shown cut away) and ABS plastic threshold scuff plate to absorb keg impact and prevent damage to floor of unit.



Most industry beer faucets are brass or chrome plated brass. As the chromium layer breaks down, the beer flowing over the exposed brass allows copper and lead to leach into the beer which affects the flavor. Glastender beer towers avoid this by having stainless steel faucets and shanks (shown cut-away) that resist corrosion and metallic leaching. [Note: faucet handles not included.]



KC24-NI-BS2(R)

## Features specific to the KC24



Seamless-welded recessed drainer for easy cleaning.

A 24" wide keg cooler is available for use in the underbar environment where side ventilation is available. The column tower is available with up to three faucets, since the unit can hold up to three 1/6th style micro brew kegs.\*



Pre-plumbed drain line to internal drain bottle (side knockout provided for optional external draining).



Hose from evaporator provides forced-air cooling of beer tower to minimize foaming issues.



CO<sub>2</sub> cylinder retention chain (knockout provided for optional external CO<sub>2</sub> connection).

\* NOTE: 1/6 barrel keg availability varies by region. Please consult your local distributor before ordering. Low profile keg taps, which only fit domestic style kegs, must be used for the 2nd and 3rd keg.

# Front Vent Coolers and Reach-In Mug Frosters

Glastender's Front Venting Coolers and Reach-In Mug Frosters match the profile of our back bar coolers and are available with one or two doors. The 24" and 48" units are completely front venting, so they can be built in to your back bar line-up or used as free standing units in the underbar area.

Digital thermostat control with automatic defrost is easily visible.

The thermostat on mug froster models is programmed to accommodate a wide operating temperature range, 0°F (-18°C) to 35°F (2°C), for either frosted or chilled glassware.



Interior designed to accommodate two full rows of long neck beer bottles.



FV24-SS(L)

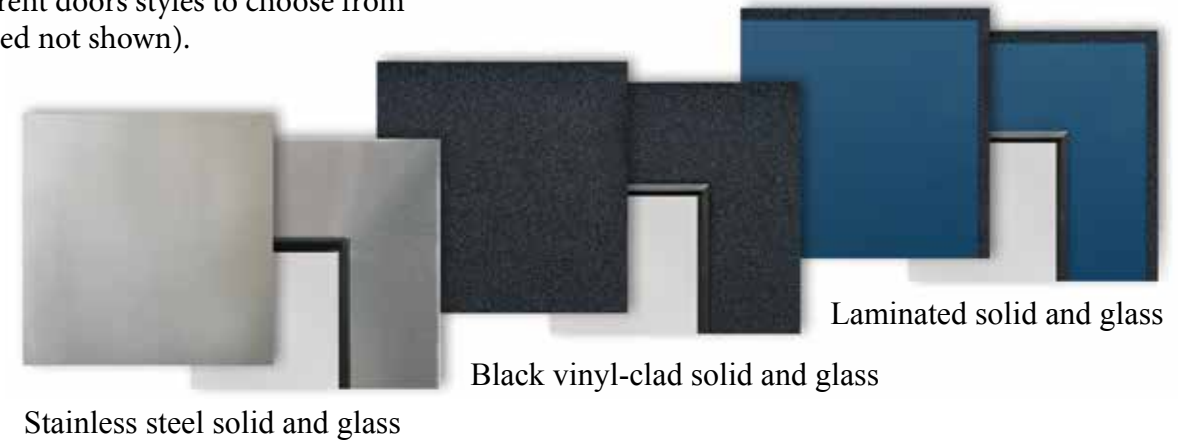


Removable refrigeration module for easy maintenance.



All stainless steel interior with radius corners for easy cleaning.

Seven different doors styles to choose from (unlaminated not shown).



Stainless steel solid and glass

Black vinyl-clad solid and glass

Laminated solid and glass



MFV48-XS(LR)



Includes LED interior lights with on/off switch.



The optional glass doors on the mug froster models feature heated panes to prevent exterior condensation.

Mug froster models include a floor rack and two adjustable shelves per door for up to three full rows of glass storage.



# Additional bar refrigeration products for even greater design flexibility

Glastender narrow door coolers match the specifications of Glastender back bar coolers, except they have 20" wide doors instead of 24", providing self-contained models in 52" (2-door), 72" (3-door), and 92" (4-door) lengths. In addition to providing size flexibility, narrow door coolers are more convenient in narrow aisle installations.



Narrow doors decrease the overall cooler footprint.



ND72-R1-GS(LRL)

Glastender pass thru coolers share many of the same features and options as Glastender back bar coolers, except they have doors on both sides, making them ideal for island bar installations.



PT60-LI-YLH (LR/RL)



Pass thru coolers allow access to product storage from both sides of the cooler.

Glastender low profile coolers share many of the same features and options as Glastender back bar coolers, except they are 6" shorter for lower counter height installations. The low profile cooler cabinet is 30" high with a finished top or 36" high with a finished top and 6" legs.



LP60-L1-XS(LR)



The 30" overall cabinet height matches the work height of standard underbar.

Glastender back bar, narrow door, low profile, and pass thru coolers are also available less the condensing unit and compressor compartment for remote refrigeration installations. Specify remote refrigeration hook-up location as left or right.



BB72-LI-BLN (LLR)



Ceiling hung evaporator and stainless steel housing is included.

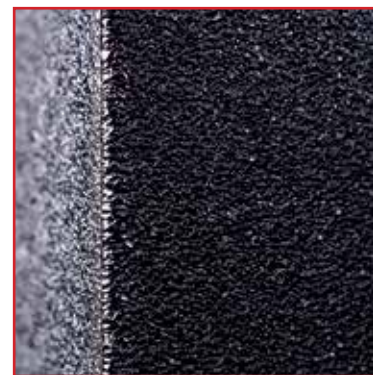
# Slide Top Cooler & Mug Froster Features

Like our entire line of bar equipment, Glastender Slide Top Coolers and Mug Frosters are designed with quality and innovation in mind. We offer several sizes and finish options, giving you incredible design flexibility.



Smooth, flush sides so no gaps are created between the unit and adjacent equipment.

24" depth for flush line-up with adjacent underbar equipment.



Available with black vinyl-clad or stainless steel exterior. (Black vinyl-clad shown)



Pull-out condensing unit for easy service.



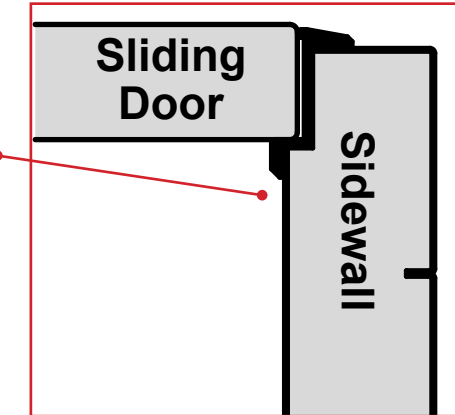
ST48-S

Front venting with no rear standoffs required for air flow, which maintains 24" depth.

Radius interior corners for easy cleaning.



The stout door sliding ledge is supported by the wall of the cabinet so the ledge will not break or collapse.



Incredibly strong one-piece top design with integral mullion that will not allow the mullion to cave in, nor the door to sag and bind.



# Additional slide top cooler features

Glastender slide top coolers are available as shallow well units in 24" and 36" lengths and as deep well units in 48", 60", 72", and 96" lengths. The exterior finish is available in black vinyl-clad, stainless steel front & sides or all stainless steel and the interior is either all stainless steel or galvanized steel with a stainless steel floor.



All models have a stainless steel interior floor to prevent rusting where moisture can collect.

Includes adjustable divider racks to prevent tipping between sections.



Built-in door locks included so that no hasps are required.



Heavy duty 16 gauge galvanized steel base with C-channel construction for incredible strength and rigidity.



Automatic condensate evaporator so no drain connection is required. (ST48-S model shown)

# Additional mug froster features

Glastender slide top mug frosters are available in 24", 36", and 48" lengths. The interior is always all stainless steel and the exterior finish is available in black vinyl-clad, stainless steel front & sides, or all stainless steel.



Interior floor drain and condensate drain to automatic evaporator so no drain connection required.

Bottom racks standard on all models. Available with two additional layers of split shelving for rotating stock.



All models have food zone safe and rust resistant stainless steel interiors.



MF36-S2

Heavy duty 16 gauge galvanized steel base with full-length front and back C-channel rigidizers for incredible strength.



Includes two convenient defrost cycles:

- Adaptive automatic - occurs as necessary every four to ten hours without affecting normal operation
- Manual - user selected for complete six hour defrost with automatic restart

Digital controller offers a wide set point range for convenient operation from 0°F (-18°C) to 35°F (2°C).



# STANDING ROOM ONLY



Storing wine bottles horizontally in your back bar refrigerator reduces its capacity and limits bottle access. Glastender's expertly designed refrigerated wine drawers have upright storage throughout, providing you with the industry's highest overall capacity as well as complete accessibility.

**Glastender.** Where little ideas make a big difference.

## Glastender.

800.748.0423 · [www.glastender.com](http://www.glastender.com)



BB60-L1-BS(LD)

— Expect more —

*more flexibility*  
more features



C1FB60  
with compressor right,  
stainless doors/drawers,  
and stainless top



**Intertek Intertek**  
4004503  
Conforms to NSF/ANSI STD 7 and UL STD 471  
Certified to CSA STD C22.2 No. 120  
Listed to NSF Standard 7 for open food storage

### Standard Features

- Locking door(s) (drawers sections do not lock)
- LED interior lighting
- Heated mullion to minimize condensation
- Evaporator above compressor compartment to maximize storage capacity
- Any door opening may be converted to a drawer section or to draft dispensing
- Available without a finished top for integrated installation below customer supplied bar top
- 180° swinging door

### Specifications

#### Electrical

- 120V, 1 phase, 60 Hz
- Full load amps - C1FB32, C1FB36 - 3.0, C1FB52, C1FB60, C1FB72, C1FB84, C1FB92, C1FB108 - 7.0
- Dedicated 15 amp circuit is required
- Includes a 6 foot NEMA 5-15P grounded cord and plug which exits the back of refrigeration compartment



#### Refrigeration

- R290 - 125 grams
- Compressor - C1FB32, C1FB36 - 1/8HP, C1FB52, C1FB60, C1FB72, C1FB84, C1FB92, C1FB108 - 1/4HP
- Heat rejection - C1FB32, C1FB36 - 1228 BTU/Hr, C1FB52, C1FB60, C1FB72, C1FB84, C1FB92, C1FB108 - 2867 BTU/Hr

#### Operating Range

- 34°F (1°C) to 40°F (4°C)

Project: _____	AIA# _____
Item #: _____ Qty: _____	SIS# _____
Model #: _____	

## Coolers One Zone, Front Serviced, Bar Profile

C1FB32, C1FB36, C1FB52, C1FB60,  
C1FB72, C1FB84, C1FB92, C1FB108

### C1FB Configurable Options

#### Temperature:

- Beer/Food - 34°F to 40°F
- White wine - 50°F to 55°F
- Red wine - 60°F to 65°F

#### Refrigeration Compartment

##### Location:

- Left or Right

#### Refrigeration Compartment

##### Cover Finish:

- Black vinyl-clad
- Unlaminated
- Stainless steel
- Jeweled stainless
- Laminated

#### Door/Drawer Style & Finish:

- Door - Black vinyl-clad
- Door - Unlaminated
- Door - Stainless steel
- Door - Jeweled stainless
- Door - Laminated
- Door - Glass, black vinyl-clad
- Door - Glass, stainless steel
- Door - Glass, jeweled stainless
- Door - Glass, laminated
- Drawers - Black vinyl-clad
- Drawers - Stainless steel
- Drawers - Jeweled stainless
- Drawers - Laminated

#### Door Hinge Location (specify for each door):

- Left or Right

#### Shelving (specify per door section):

- Three adjustable shelves
- Keg rack

#### Door Handle:

(Note: drawers come with a stainless pull tab handle and no lock)

- Polished stainless
- Polished brass
- Stainless pull tab

#### Top Style:

- No finished top
- Stainless top
- Laminated top

#### Left and Right Side Finish:

- Black vinyl-clad
- Stainless steel
- Laminated

#### Back Finish:

- Galvanized steel
- Stainless steel

#### LED Lighting Style:

- Bright white (7,000k)
- Warm white (3,500k)
- Amber (2,700k)
- Blue

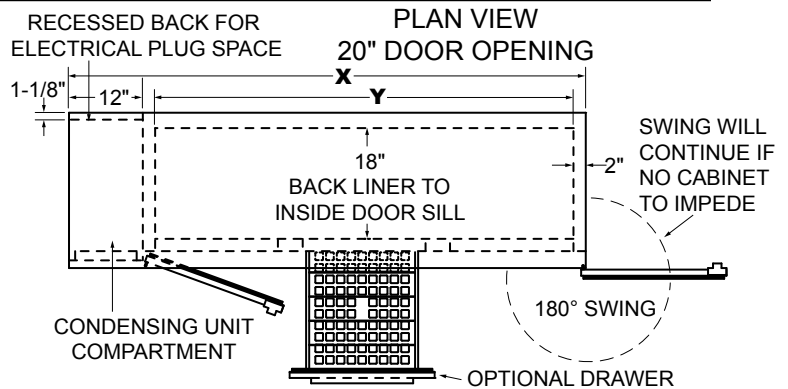
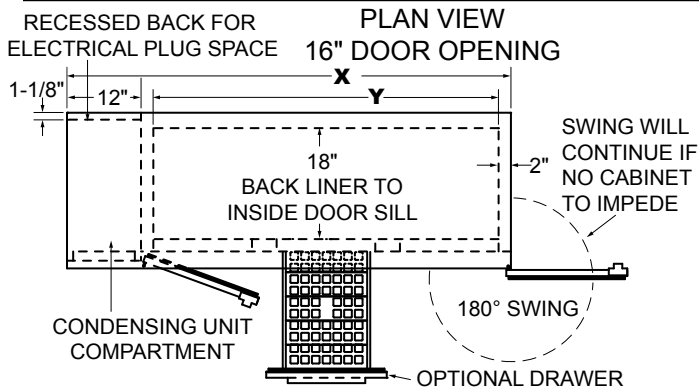
See our Product Directory for a complete list of cooler accessories.

<p><b>Glastender, Inc.</b> • 5400 N Michigan Rd • Saginaw, MI • 48604-9780 989.752.4275 • 800.748.0423 • Fax 989.752.4444 www.glastender.com</p>	<p>Approval/Notes:</p>
--	------------------------

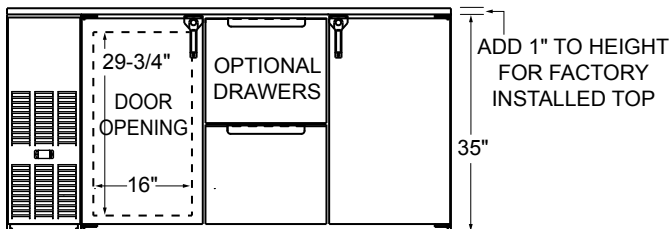
Specifications subject to change without notice. For current specifications please visit our website.

# Coolers - One Zone, Front Serviced, Bar Profile

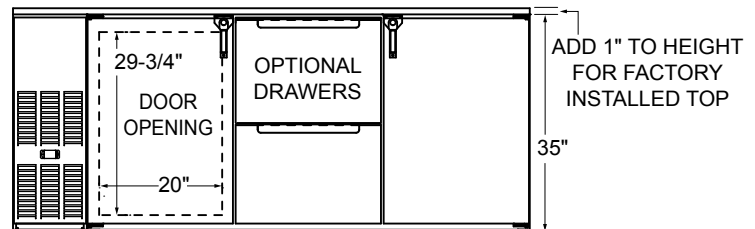
## Dimensional Information



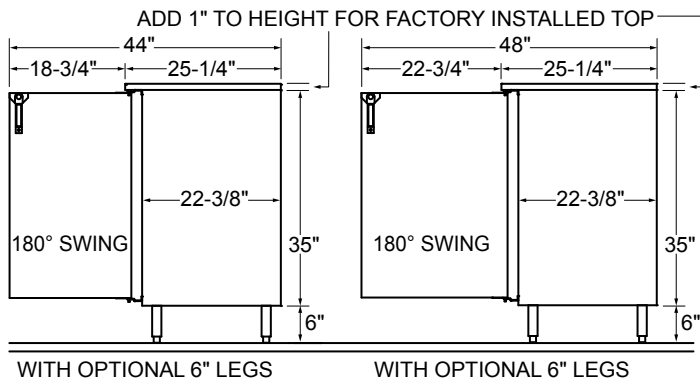
FRONT VIEW 16" DOOR OPENING



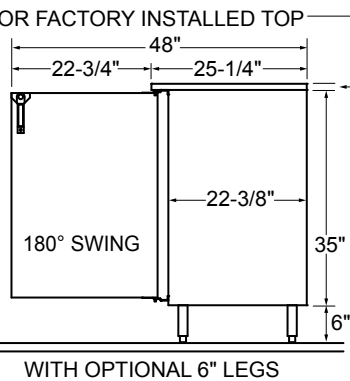
FRONT VIEW 20" DOOR OPENING



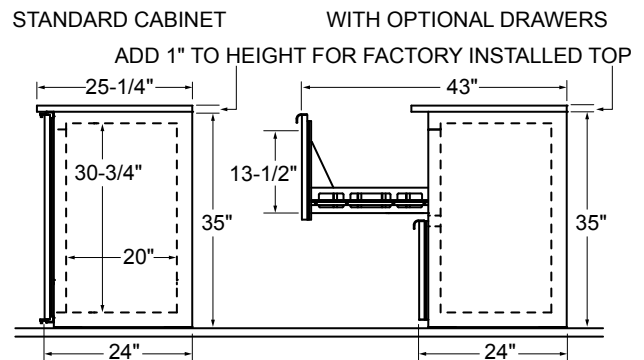
SIDE VIEW 16" DOOR OPENING



SIDE VIEW 20" DOOR OPENING



SIDE VIEW



Note: Available with compressor left or right. Compressor left model shown.

16" Door Opening Models	Capacities						
	X	Y	DOORS	12 oz. bottles, cases	750ml wine bottles*	1/2 barrel kegs	1/6 barrel kegs
C1FB32	32"	16"	1	5.8	57	N/A	2
C1FB52	52"	36"	2	13.3	116	N/A	7
C1FB72	72"	56"	3	21.1	188	N/A	11
C1FB92	92"	76"	4	28.8	260	N/A	15

20" Door Opening Models	Capacities						
	X	Y	DOORS	12 oz. bottles, cases	750ml wine bottles*	1/2 barrel kegs	1/6 barrel kegs
C1FB36	36"	20"	1	7.8	70	1	4
C1FB60	60"	44"	2	17.3	164	2	8
C1FB84	84"	68"	3	27.1	248	4	14
C1FB108	108"	92"	4	36.8	332	5	18

\*Drawer units hold up to 40 wine bottles per 20" section and up to 60 wine bottles per 24" section



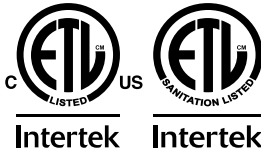
5400 N Michigan Rd • Saginaw, MI • 48604-9780  
 989.752.4275 • 800.748.0423 • Fax 989.752.4444  
 www.glastender.com

Printed in USA





C1SB24 with compressor left, stainless drawers, and stainless top



4004503  
 Conforms to NSF/ANSI STD 7 and UL STD 471  
 Certified to CSA STD C22.2 No. 120  
 Listed to NSF Standard 7 for open food storage

### Standard Features

- Locking door(s) (drawers sections do not lock)
- LED interior lighting
- Heated mullion to minimize condensation
- Any door opening may be converted to a drawer section or to draft dispensing
- Available without a finished top for integrated installation below customer supplied bar top
- 180° swinging door

### Specifications

#### Electrical

- 120V, 1 phase, 60 Hz
- Full load amps - 2.75
- Dedicated 15 amp circuit is required
- Includes a 6 foot NEMA 5-15P grounded cord and plug which exits the back of refrigeration compartment

#### Refrigeration

- R290 - 105 grams
- Compressor - 1/8 HP
- Heat rejection - 1126 BTU/Hr

#### Operating Range

- 34°F (1°C) to 40°F (4°C)

#### Plumbing

- Automatic condensate evaporator. No drain connection required.



Project: _____	AIA# _____
Item #: _____ Qty: _____	SIS# _____
Model #: _____	

## Coolers, One Zone, Side Serviced, Bar Profile

C1SB24, C1SB28, C1SB36, C1SB44, C1SB48

### C1SB Configurable Options

#### Temperature:

- Beer/Food - 34°F to 40°F
- White wine - 50°F to 55°F
- Red wine - 60°F to 65°F

#### Refrigeration Compartment

##### Location:

- Left or Right

#### Refrigeration Compartment

##### Cover Finish:

- Black vinyl-clad
- Stainless steel
- Jeweled stainless

#### Door/Drawer Style & Finish:

- Door - Black vinyl-clad
- Door - Unlaminated
- Door - Stainless steel
- Door - Jeweled stainless
- Door - Laminated
- Door - Glass, black vinyl-clad
- Door - Glass, stainless steel
- Door - Glass, jeweled stainless
- Door - Glass, laminated
- Drawers - Black vinyl-clad
- Drawers - Stainless steel
- Drawers - Jeweled stainless
- Drawers - Laminated

#### Door Hinge Location (specify for each door):

- Left or Right

#### Shelving (specify per door section):

- Three adjustable shelves
- Keg rack

#### Door Handle:

(Note: drawers come with a stainless pull tab handle and no lock)

- Polished stainless
- Polished brass
- Stainless pull tab

#### Top Style:

- No finished top
- Stainless top
- Laminated top

#### Left and Right Side Finish:

- Black vinyl-clad
- Stainless steel
- Laminated

#### Back Finish:

- Galvanized steel
- Stainless steel

#### LED Lighting Style:

- Bright white (7,000k)
- Warm white (3,500k)
- Amber (2,700k)
- Blue

See our Product Directory for a complete list of cooler accessories.

Glastender, Inc. • 5400 N Michigan Rd • Saginaw, MI • 48604-9780  
 989.752.4275 • 800.748.0423 • Fax 989.752.4444  
[www.glastender.com](http://www.glastender.com)

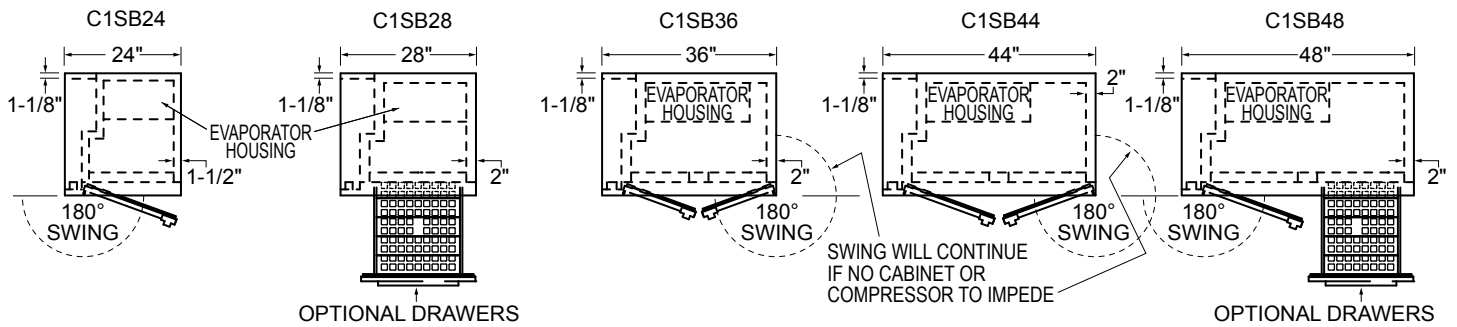
Approval/Notes:

Specifications subject to change without notice. For current specifications please visit our website.

# Coolers - One Zone, Side Serviced, Bar Profile

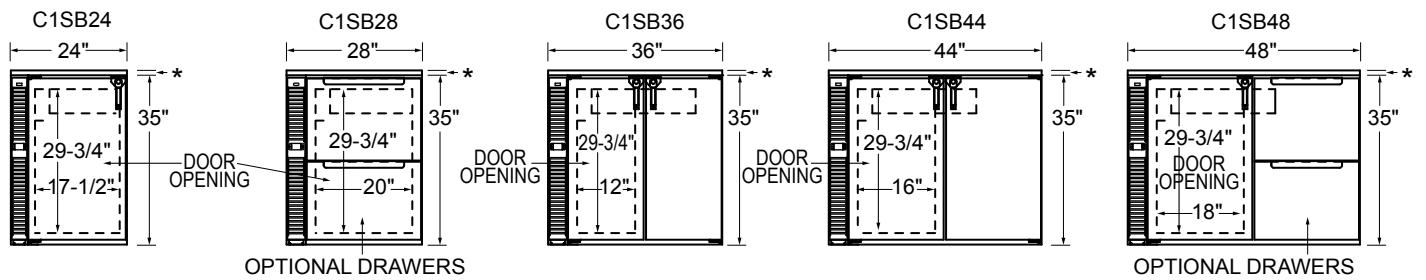
## Dimensional Information

### PLAN VIEWS



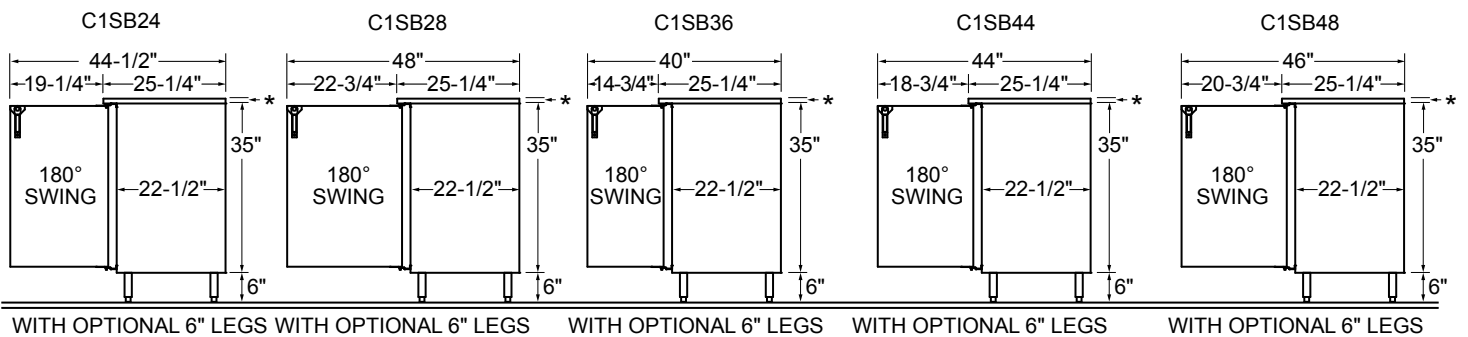
### FRONT VIEWS

\*ADD 1" HEIGHT TO TOP FOR FACTORY INSTALLED TOP



### SIDE VIEWS

\*ADD 1" HEIGHT TO TOP FOR FACTORY INSTALLED TOP



Note: Available with compressor left or right. Compressor left model shown.

Model	DOORS	Capacities			
		12 oz. bottles, cases	750ml wine bottles*	1/2 barrel kegs	1/6 barrel kegs
C1SB24	1	5.8	60	1	3
C1SB28	1	6.6	72	1	4
C1SB36	2	8.9	106	N/A	5
C1SB44	2	12.0	132	N/A	7
C1SB48	2	13.2	154	2	8

\*Drawer units hold up to 40 wine bottles per 20" section and up to 60 wine bottles per 24" section

### SIDE VIEWS

