



Easybar[®]

BEVERAGES CONTROLLED

EASYBAR BMS CLCS-II TECHNOLOGY



THE LAST SOLUTION TO INCREASED PROFITABILITY

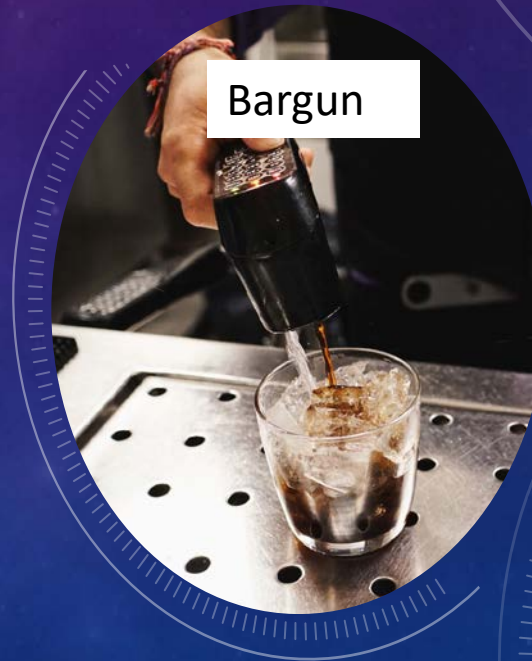
- **Know your liquors served.** How, what, where, how much, by whom.
- **Plan your liquors served.** Portion, brands, recipe and speed.
- **Own your liquors served.** Bottles secured at the bar to pour, and fast moving brands secured in liquor room rack.

DISPENSING OPTIONS AND TECHNOLOGIES

- Advanced Beverage Controls
- Advanced Dispensing Options
 - Fast moving & cocktail liquors bargun
 - Spout Station by the bottle pour controller via sealed spouts
 - Touchscreen cocktail stations for self serve, retail, and large scale service.



Cocktail Stations



Bargun



Spout Station



SECURED CENTRAL RESERVE

- Keep all liquor bottles in remote secured store.
- Connects to bargun dispenser via foodgrade tubing from liquor manifolds through peristaltic pumps and solenoids.
- Bar gun has 16 buttons, 16 brands with option of 3 to 6+ bottles per brand select. Bottles finish to last drop, one by one.
- Each drop is sold via system and reported.



LIQUOR & COCKTAIL ELECTRONIC DISPENSER

- 16 brands per dispenser, and upto 4 dispensers per electronic box.
- Exact ml dispensing, soft pour. 2.5 seconds per liquor and a cocktail in 3.5 seconds.
- Up to five liquors per cocktail, post mix into glass. Liquor travels from separate groove and tubes.
- One central reserve bottles can serve from 1 to 6 stations by teeing dispensers from first till sixth.

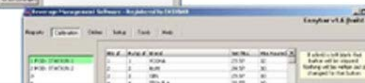
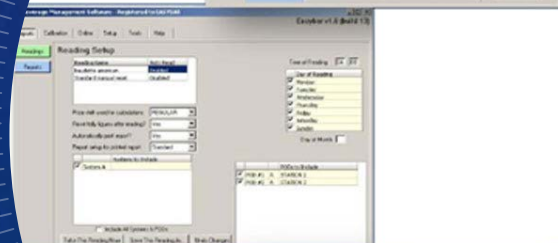


DRAFT BEER CONTROL

- Portion control draft beers.
- Identify each time a beer tap is opened and for how long, sending a signal to a wireless receiver, which records the amount poured for the beer assigned to that tap. Easydraft reports track sales, costs, waste, and inventory usage.

BACKROOM CONTROL, CALIBRATION AND USAGE

- Plan all beverage recipes, brands, stations and pour sizes in BMS software. Free license with each system.
- Set up multi stations, calibrate pour sizes, and cocktails. Allot brands to pour spouts and bargain buttons.
- Fetch live reports of use and time. Lock system remotely. A total control on every drop of liquor, beer, beverage sold.



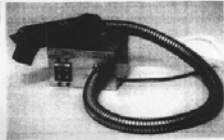
(To be published in the Gazette of India, Part II, Section 3, Sub-section (ii))
Government of India
Ministry of Consumer Affairs, Food and Public Distribution
Department of Consumer Affairs
New Delhi, Dated the—29th 16/3 2004

Notification

S.O.—Whereas the Central Government, after considering the report submitted to it by the prescribed authority, is satisfied that the model described in the said report (see the figure given below) is in conformity with the provisions of the Standards of Weights and Measures Act, 1976 (60 of 1976) and the Standards of Weights and Measures (Approval of models) Rules, 1987 and the said model is likely to maintain its accuracy over periods of sustained use and to render accurate service under varied conditions;

Now, therefore, in exercise of the powers conferred by sub-sections (7) and (8) of section 36 of the said Act, the Central Government hereby issues and publishes the certificate of approval of the model of Automatic Liquor Measure with brand name "EASYBAR" (hereinafter referred to as the said model), manufactured by M/s Beverage Management Systems, 19799 SW 29th Place, Suite A, Tualatin, OR 97062, State of Oregon, U.S.A. and marketed in India by M/s V-Medians Inc, C-194 (LGF) Defence Colony, New Delhi-110024 and which is assigned the approval mark INDMS/2004/263.

Figure



MSR-NEW 1003
New Delhi, the 21st December, 2004

S.O. 85—Whereas the Central Government, after considering the report submitted to it by the prescribed authority, is satisfied that the Model described in the said report (see the figure given below), is in conformity with the provisions of the Standards of Weights and Measures Act, 1976 (60 of 1976) and the Standards of Weights and Measures (Approval of Models) Rules, 1987 and the said Model is likely to maintain its accuracy over periods of sustained use and to render accurate service under varied conditions;

Now, therefore, in exercise of the powers conferred by sub-sections (7) and (8) of Section 36 of the said Act, the Central Government hereby issues and publishes the certificate of approval of the Model of Automatic Liquor Measure with brand name "EASYPOUR" (hereinafter referred to as the said Model) manufactured by M/s. Beverage Management Systems, 19799 SW 29th Place, Suite A, Tualatin, Oregon 97062 and marketed in India by M/s V-Medians Inc, C-194, LGF Defence Colony, New Delhi-110024 and which is assigned the approval mark INDMS/2004/276.



The said Model (see the figure given above) is an automatic liquor measure with a filling capacity of 30ml at a time. It is used for filling the liquid products like liquor, beer, wine, soda etc. It is a dispensing device where there is a control unit to which a ring reader is attached through a cord. The bottles are fitted with magnetic piston and sealed. The liquor will dispensed from the bottle only when the bottle with piston is taken through the ring reader.

(P. No. Wh-21176/2003)

P. A. KRISHNAMOORTHY, Director of Legal Metrology

APPROVED BY WEIGHTS & MEASURES UNDER MODEL APPROVAL CERTIFICATION IN INDIA

- Approved by Ministry of Consumer Affairs, under model code by weights and measures department to use nationally in India.
- No additional approval needed. Licensed to use in India.
- To get a local stamp you may issue the certificate with local authority and receive a regional stamp.

EASYBAR SYSTEM USERS

United States

- Caesars Entertainment
- Mercedes Benz Stadium
- Wynn Las Vegas
- Burgr Gordon Ramsay
- Hard Rock Hotel
- Bellagio Las Vegas
- Four Seasons Resort..

India Projects

- Park Hotels
- Dream Hotel Kochi
- Taj Trivandrum
- Rockman's Beer Island

ABOUT EASYBAR

Easybar was established in 1968 as a manufacturer and supplier of industry-leading liquor accountability equipment, draft beer systems and beverage conduit systems. With over 40 years of experience working with designers, general contractors, and corporate operators in the food and beverage industry, Easybar ensures a package that will be best suited to the needs of the client without any excess materials or expense. Our corporate office and manufacturing plant is located in Tualatin, Oregon – just fifteen minutes south of Portland. We have corporate reps in several states including California, Connecticut, Nevada, Illinois, Florida, Tennessee, Georgia and New Mexico. We also have independent distributors and service providers located throughout the United States.

James Nicol, CEO, Easybar.com



EASYBAR

Easybar Systems are quickly and easily installed by Studiobar AIPL in India and worldwide with user orientation, training on usage, programming and reporting.

Studiobar will assist you in import whether in duty free direct forex purchase, as well as sales in local tax paid order.

- Lead Time: 4-6 Weeks
- Delivery: 2-4 Weeks

Hilknightly Pte Ltd

info@hilknightly.com

www.hilknightly.com