





# WHY HILKNIGHTLY

AS A MANUFACTURER'S REP, OUR CORE PROFILE IS PARTNERSHIPS AND RELATIONSHIPS MOVING ADVANCED, LATEST AND SUCCESSFUL TECHNOLOGY FROM SOURCE TO NEED. AS FACTORY RESOURCE WE CARRY DETAILED RANGE, KNOWHOW, AND THE MOST RELIABLE PROCUREMENT AS WELL AS INSTALLATION SYSTEM. BELOW ARE THE FOUR TENETS THAT MAKE HILKNIGHTLY COLLECTION A WINNING COMBINATION.

## E Q U I P M E N T



Draft Beer



Bars



Cellars



Blending



Humidors

1

Future focused smart engineered solutions.

2

Consumer need driven impactful facility creation.

3

Spares +10 years safety. Product life is till spares availability.

4

Best in design fit-out resource, for impeccable spaces.





# SEGMENTS WE SERVICE



# Commercial



# SEGMENTS WE SERVICE



# Residential



# LIST OF INDEPENDENT JOBS

- 1911, THE IMPERIAL, DELHI (OUR FIRST INSTALLATION IN INDIA)
- GOLF BAR, ITC MAURYA, DELHI
- PANGAEA, ASHOK HOTEL DELHI
- ROCKMAN'S BEER ISLAND, GURGAON
- HOWZZAT BREWERY, GALAXY, GURGAON
- SCRUPLES, PLLAZIO, GURGAON
- BAR ZEN, MARRIOTT COURTYARD, GURGAON
- CHERRY BAR, THE LEELA SHAHADRA
- ORBIS, THE LEELA GURGAON
- DUBLIN, ITC MAURYA, DELHI
- HUMBLE HOUSE, ITC MAURYA, DELHI
- POINT OF VIEW, ITC MAURYA, DELHI
- AQUA, THE PARK, DELHI
- MIST, THE PARK, DELHI
- KITTY SU CLUB, THE LALIT, DELHI
- BLUE FROG BAR, MEHRAULI
- GEOFFREY:S, PARK PLAZA, FARIDABAD
- LUST, THE RADISSON, GHAZIABAD
- ORO, RADISSON, PASCHIM VIHAR DELHI
- ACSA, U.S. EMBASSY, DELHI
- TERRACE BAR, U.S. EMBASSY, DELHI
- LAP CLUB, SAMRAT HOTEL, DELHI
- OKO, THE LALIT, CHANDIGARH
- WILD FIRE RESTAURANT, CROWNE PLAZA, GURGAON
- CONNEXIONS LOBBY BAR, CROWNE PLAZA, GURGAON
- SHEESH MAHAL, ITC RAJPUTANA, JAIPUR
- POOL BAR, ITC RAJPUTANA, JAIPUR
- TAMAN GANG, DLF PROMENADE, DELHI
- ITALIA, DLF PROMENADE, DELHI
- TERRACE BAR, OPTUS SAROVAR, GURGAON
- KITTU SU CLUB, THE LALIT, CHANDIGARH
- OKO, THE LALIT, CHANDIGARH
- BALUCHI, THE LALIT, CHANDIGARH
- CAPITAL KITCHEN, TAJ PALACE, DELHI
- DLF CREST CLUB, GURGAON (DEALER)
- EMPEROR'S LOUNGE, TAJ MANSINGH, DELHI
- CHAMBER'S, TAJ MANSINGH, DELHI
- LOBBY BAR, THE CONNAUGHT, DELHI
- EARTH PLATE, SAHARA STAR MUMBAI
- DUSK, THE PARK NAVI MUMBAI
- HIGH LOUNGE, SAHARA STAR MUMBAI
- FLUTE, SAHARA STAR MUMBAI
- LAGOON LOUNGE, SAHARA STAR MUMBAI
- SIX DEGREE, THE LEELA KEMPINSKI MUMBAI
- TOTE ON THE TURF, MAHALAXMI MUMBAI
- INDIGO RESTAURANT, COLABA MUMBAI
- BOMBAY HIGH, ITC MARATHA MUMBAI
- PAN ASIAN, ITC MARATHA MUMBAI
- RESIDENT LOUNGE, ITC MARATHA MUMBAI
- PESHAWARI, ITC MARATHA MUMBAI
- IBIS HOTEL AIRPORT MUMBAI
- BLUE FROG BAR MUMBAI
- POINT OF VIEW, ITC GRAND CENTRAL MUMBAI
- DUBLIN, ITC GRAND CENTRAL MUMBAI
- AQUA, THE LEELA GOA
- TRIKAYA, VERSOVA MUMBAI
- CHILI'S MARKETCITY PUNE
- EASY LOUNGE BAR, TAJ BLUE DIAMOND PUNE
- BEST BREW PUB, SHERATON FOUR POINTS PUNE
- NIGHTCLUB, TIGERCAMP GOA
- AL FRESCO BAR, TIGERCAMP GOA
- MAIN BAR, TIGERCAMP GOA
- 6RIUMPH HOTEL, GOA (DEALER)
- QUALIA, LODHA, MUMBAI, EXPOSRL(2019)
- LOBBY BAR, TAJ GATEWAY RESIDENCYROAD
- MYNT, TAJ WEST END (2019)
- TRINITY, TAJ MG ROAD (2019)
- LIBRARY LOUNGE, THE LEELA PALACE BLR
- BLUE BAR, TAJ WEST END BLR
- ICE BAR, TAJ VIVANTA RESDENCY BLR
- SHIMMER, TAJ VIVANTA YESHWANTHPURBLR
- MED RESTAURANT, TAJ VIVANTA YESH.BLR
- PALM MEADOWS CLUB BLR
- TEASE, TAJ VIVANTA ITPL BLR
- AMNESIA, CHANCERY PAVILION BLR
- THE LOUNGE, CHANCERY PAVILION BLR
- HIGHLAND NECTAR, ITC GARDENIA BLR
- WEST VIEW, ITC GARDENIA BLR
- AQUA, THE PARK HOTEL BLR
- I-BAR, THE PARK HOTEL BLR
- MRS. GEORGE PENTHOUSE RESIDENCE
- MAYA RESTAURANT BLR
- FIREFLIES AT LAVELLE ROAD BLR
- DUBLIN, PARK SHERATON CHENNAI
- TWIST, TAJ VIVANTA TRIVANDRUM
- LEATHER BAR, PARK CHENNAI
- HIGH BAR, DREAM COCHIN
- AVA LOUNGE, DREAM COCHIN
- WELLINGTON, DREAM COCHIN
- TEASE, TAJ VIVANTA COIMBATORE
- ANCHOR, TAJ FISHERMAN COVE
- DEBUSSY BAR, CGH EARTH COCHIN
- POOL BAR, ITC GARDENIA BLR
- THE HUB, IBIS HOSUR ROAD BLR
- WINCHESTER BAR, RADISSON BLU CHENNAI
- 1CITY BAR, UB CITY BLR
- SANCTUM, CHANCERY PAVILION BLR
- CLUB EXCESS HICC NOVOTEL
- SYN, TAJ DECCAN
- WATERFRONT RESTAURANT, HS LAKE
- DUBLIN, ITC KAKATIYA
- KISMET CLUB, THE PARK HOTEL
- SIKKA LOUNGE, THE PARK HOTEL
- CAFÉ, THE PARK HOTEL
- CARBON, THE PARK HOTEL
- PRITHVI REDDY RESIDENCE
- THE BLUE FOX, MINERVA GRAND
- SUTRA, GRAND ASHOLK LALIT
- VUE, NOVOTEL VIZAG
- TERRACE BAR, NOVOTEL VIZAG
- GREAT KEBAB FACTORY, RADISSON INDORE
- LOBBY BAR, RADISSON INDORE
- TEASE, TAJ VIVANTA GOA



# LIST OF INDEPENDENT JOBS & LOCATIONS

- BODHI BAR, THE PARK KOLKATA
- WEST VIEW, ITC SONAR BANGLA
- PAN ASIAN, ITC SONAR BANGLA
- DUBLIN, ITC SONAR BANGLA
- BAY OF BENGAL, ITC SONAR BANGLA
- DARJEELING LOUNGE, ITC SONAR BANGLA
- AQUA, THE PARK HOTEL
- ROXY, THE PARK HOTEL
- CAFÉ BAR, THE PARK KOLKATA
- PRE FUNCTION BAR, PARK TPCL
- MIX BAR, TAJ SAMUDRA, COLOMBO, SRI LANKA
- TEASE BAR, TAJ SAMUDRA BENTOTA, SRILANKA
- PANGAEA ULTRALOUNGE, CITY OF DREAMS MANILA
- CHAOS NIGHTCLUB, CITY OF DREAMS MANILA
- HARD ROCK CAFÉ, LAGOS
- SHIRO, LAGOS
- SIX SENSES SPA, BHUTAN (DEALER)
- MARRIOTT KATHMANDU (DEALER)





**Glastender**

Pre-engineered Modular  
Bar System

**CLENAWARE**  
SYSTEMS

ware excellence is standard

Beer Clean Glasswashing Systems

**Caveduke**  
THE BRAND OF THE TOWER

Bespoke Wine Cellars  
and Cigar humidors

**winefit**

Wine by Glass  
Dispensing Systems

**EXPO**

Modular Wine Showcases

**la Sommelière**

Wine Collection Cabinets

**ITV**  
ICE makers

**VITRIFRIGO**  
COOL AND BEYOND

Built in Refrigeration



## OEM PARTNERSHIPS

- ITV
- Dunavox
- Glastender
- Clenaware
- Easybar
- Tefcold
- Vitrifrigo
- Expo
- La Sommelière
- Caveduke
- Winefit
- The Wine Square





# Our Works







Backbars ▲ Draft Beer ▲ Wine Cellars ▲ Brewery ▲ Automation ▲ Private Selections





# TRANSFORMATIONS



## Sahib, All Day Dining Taj Vivanta Lucknow

**PROJECT** ALL DAY DINING      **DESIGN TYPE** BAR BEV. AND BUFFER      **LOCATION** LUCKNOW

**REVISION DISCLAIMER** The reviewer must check into the master shared folder of this drawing to see if there is a latest revision on it. Link to shared drive is in the project section online at [www.benneta.com/panorama/](http://www.benneta.com/panorama/)  
Missing the revision may result in equipment not fitting into the bar space.

**PROJECT DRIVE**

**EQUIPMENT SCHEDULE**

Item	Qty	Manufacturer / Category	Manufacturer	Equipment Remarks	Notes
011	1	1	1	1	1
012	1	1	1	1	1
013	1	1	1	1	1
014	1	1	1	1	1
015	1	1	1	1	1
016	1	1	1	1	1
017	1	1	1	1	1
018	1	1	1	1	1
019	1	1	1	1	1
020	1	1	1	1	1
021	1	1	1	1	1
022	1	1	1	1	1
023	1	1	1	1	1
024	1	1	1	1	1
025	1	1	1	1	1
026	1	1	1	1	1
027	1	1	1	1	1
028	1	1	1	1	1
029	1	1	1	1	1
030	1	1	1	1	1
031	1	1	1	1	1
032	1	1	1	1	1
033	1	1	1	1	1
034	1	1	1	1	1
035	1	1	1	1	1
036	1	1	1	1	1
037	1	1	1	1	1
038	1	1	1	1	1
039	1	1	1	1	1
040	1	1	1	1	1
041	1	1	1	1	1
042	1	1	1	1	1
043	1	1	1	1	1
044	1	1	1	1	1
045	1	1	1	1	1
046	1	1	1	1	1
047	1	1	1	1	1
048	1	1	1	1	1
049	1	1	1	1	1
050	1	1	1	1	1
051	1	1	1	1	1
052	1	1	1	1	1
053	1	1	1	1	1
054	1	1	1	1	1
055	1	1	1	1	1
056	1	1	1	1	1
057	1	1	1	1	1
058	1	1	1	1	1
059	1	1	1	1	1
060	1	1	1	1	1
061	1	1	1	1	1
062	1	1	1	1	1
063	1	1	1	1	1
064	1	1	1	1	1
065	1	1	1	1	1
066	1	1	1	1	1
067	1	1	1	1	1
068	1	1	1	1	1
069	1	1	1	1	1
070	1	1	1	1	1
071	1	1	1	1	1
072	1	1	1	1	1
073	1	1	1	1	1
074	1	1	1	1	1
075	1	1	1	1	1
076	1	1	1	1	1
077	1	1	1	1	1
078	1	1	1	1	1
079	1	1	1	1	1
080	1	1	1	1	1
081	1	1	1	1	1
082	1	1	1	1	1
083	1	1	1	1	1
084	1	1	1	1	1
085	1	1	1	1	1
086	1	1	1	1	1
087	1	1	1	1	1
088	1	1	1	1	1
089	1	1	1	1	1
090	1	1	1	1	1
091	1	1	1	1	1
092	1	1	1	1	1
093	1	1	1	1	1
094	1	1	1	1	1
095	1	1	1	1	1
096	1	1	1	1	1
097	1	1	1	1	1
098	1	1	1	1	1
099	1	1	1	1	1
100	1	1	1	1	1

REFER TO PROJECT SPEC BOOK FOR PICTORIAL PRODUCT INFO.

**ELEVATION (BAR ELEVATION)**

**DESIGN NUM.** D17.13182901.21      **CUSTOMER** TAJ LUCKNOW HOTEL      **DESIGN STATUS** DRAFT

**DATE** 2017/03/07      **DOC SIZE** A3      **DESIGNER** VICKRAM NEDERATA

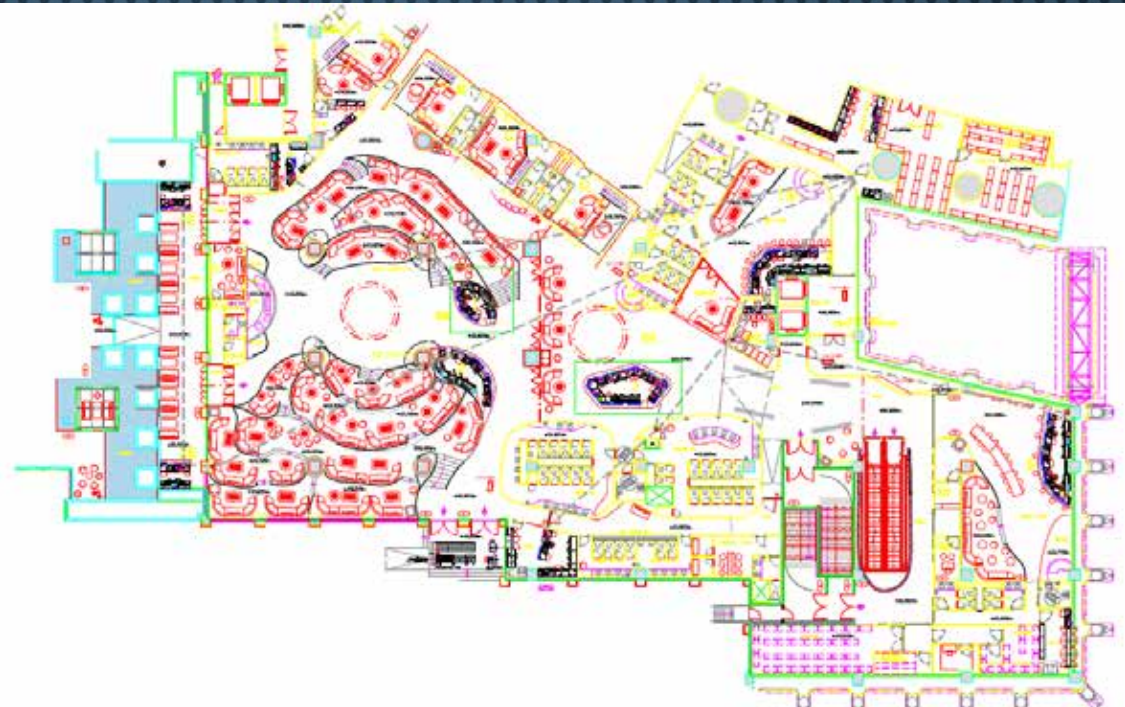
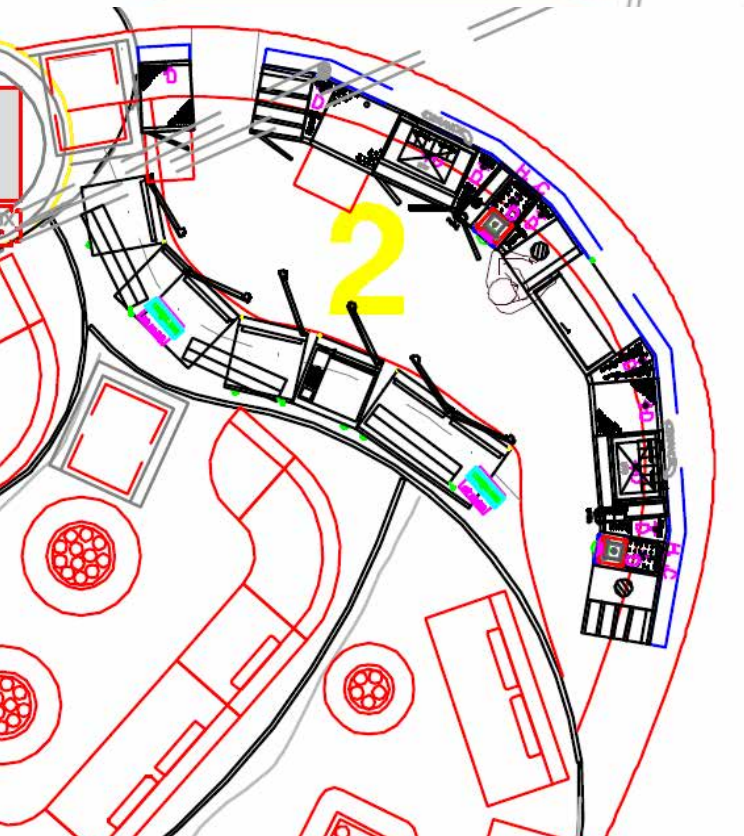
BENNETA BARSCOPE PVT LIMITED | 1000 BIF TORONTO, ONTARIO, CANADA | 416-491-1100 | 1000 BIF TORONTO, ONTARIO, CANADA | 416-491-1100



# TRANSFORMATIONS



Pacha Nightclub  
Studio City Macau



**SERVICE LEGENDS**

Power outlet, above counter	Drain Outlet, requires connection	Hot Water Outlet	Junction Box for Tubing Connections	<b>Bar On Millwork</b>
Power outlet, below counter	Floor trap, with drain leads in	Cold Water Outlet	670s Bar Conduit, 24" Radius Bends	<b>Instructions</b>
E/O Box	Drain connect, end, one side	473s Bar Conduit, 18" Radius Bends	Drain connect, end, all	Drains must run within 3" AFF Power below counter are 12" AFF (Center-Socket), above counter are 44" AFF (Center-Socket)
E/O Inlet on wall	Drain connect, intermediate			Plan connections are within 3" AFF at floor level and 4" high for the E/O Boxes in built in wall
E/O Bar On				

<b>Project</b>	Pacha Nightclub DMCE1 1503	<b>Job #</b>	6379845	<b>Plot Area</b>	48.0H
<b>Customer</b>	MCE Studio City Macau	<b>Architects</b>	BENEFIA	<b>Level</b>	1500H
<b>Contact</b>	Mr. Garry Lawrence	<b>Form</b>	DB11	<b>Scale</b>	1:200
<b>Open Date</b>	14/03/2015	<b>Sheet</b>	A1	<b>Location</b>	1208-09 DLS Tower, E. Jiaolu Dist Center, N.W. District, S.A.
<b>Scale Point</b>	Hilongtiy Night Bar	<b>Number</b>	DB11	<b>Author</b>	1208-09 DLS Tower, E. Jiaolu Dist Center, N.W. District, S.A.

DESIGN BUILD  
BENEFIA



# TRANSFORMATIONS



Pacha Nightclub  
Studio City Macau





# TRANSFORMATIONS

Expo Wine Showcase  
DLF Farms, Delhi





# TRANSFORMATIONS

## Kismet Nightclub The Park Hyderabad



SECTION	LOCATION	SECTION ELEVATION
1	BAR	1.00
2	BAR	1.00
3	BAR	1.00
4	BAR	1.00
5	BAR	1.00
6	BAR	1.00
7	BAR	1.00
8	BAR	1.00
9	BAR	1.00
10	BAR	1.00
11	BAR	1.00
12	BAR	1.00
13	BAR	1.00
14	BAR	1.00
15	BAR	1.00
16	BAR	1.00
17	BAR	1.00
18	BAR	1.00
19	BAR	1.00
20	BAR	1.00
21	BAR	1.00
22	BAR	1.00
23	BAR	1.00
24	BAR	1.00
25	BAR	1.00
26	BAR	1.00
27	BAR	1.00
28	BAR	1.00
29	BAR	1.00
30	BAR	1.00
31	BAR	1.00
32	BAR	1.00
33	BAR	1.00
34	BAR	1.00
35	BAR	1.00
36	BAR	1.00
37	BAR	1.00
38	BAR	1.00
39	BAR	1.00
40	BAR	1.00
41	BAR	1.00
42	BAR	1.00
43	BAR	1.00
44	BAR	1.00
45	BAR	1.00
46	BAR	1.00
47	BAR	1.00
48	BAR	1.00
49	BAR	1.00
50	BAR	1.00
51	BAR	1.00
52	BAR	1.00
53	BAR	1.00
54	BAR	1.00
55	BAR	1.00
56	BAR	1.00
57	BAR	1.00
58	BAR	1.00
59	BAR	1.00
60	BAR	1.00
61	BAR	1.00
62	BAR	1.00
63	BAR	1.00
64	BAR	1.00
65	BAR	1.00
66	BAR	1.00
67	BAR	1.00
68	BAR	1.00
69	BAR	1.00
70	BAR	1.00
71	BAR	1.00
72	BAR	1.00
73	BAR	1.00
74	BAR	1.00
75	BAR	1.00
76	BAR	1.00
77	BAR	1.00
78	BAR	1.00
79	BAR	1.00
80	BAR	1.00
81	BAR	1.00
82	BAR	1.00
83	BAR	1.00
84	BAR	1.00
85	BAR	1.00
86	BAR	1.00
87	BAR	1.00
88	BAR	1.00
89	BAR	1.00
90	BAR	1.00
91	BAR	1.00
92	BAR	1.00
93	BAR	1.00
94	BAR	1.00
95	BAR	1.00
96	BAR	1.00
97	BAR	1.00
98	BAR	1.00
99	BAR	1.00
100	BAR	1.00

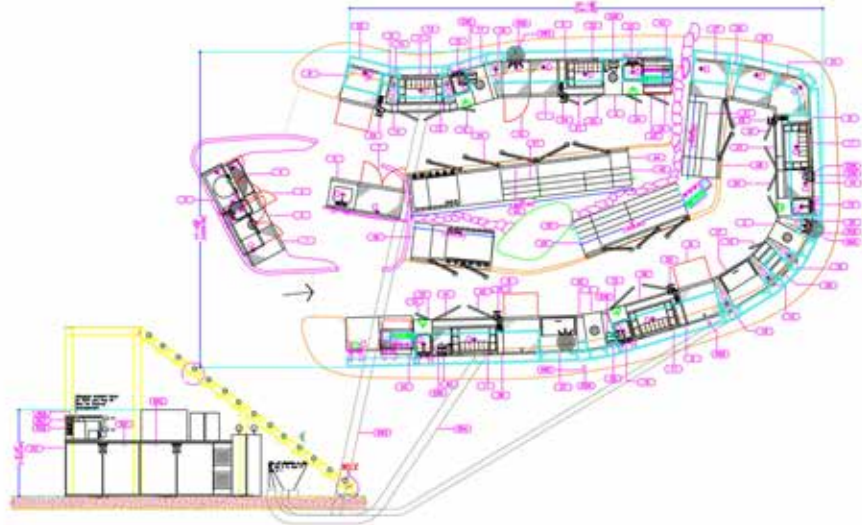
SECTION ELEVATION  
LOCATION

**BAR STORAGE CAPACITY**  
Capacity information here.

**SERVICE LEGENDS**

- Power Supply: 220V-15A (Check other specs on site) (Standard equipment)
- Hot Water and Cold Water Supply Pressure: regulated between 25 to 100 psi. Hot Water temperature: +40°C.
- Drain actual fall: 1/4" to 1/2" (standard). Allowed to use more drain line running within 2" from Subsoil and within 6" AT.
- Drain floor trap: Catchment trap with the trap float, open for high volume without water spill.

**CONTRACTOR NOTICE:**  
Modular Die style installation requires drainage to be set inside for the fixture within 6" AT (other installation).  
Hot and Cold water trap: Floor traps are provided from floor to trap via Subsoil.  
Please use your project manager prior to laying of services.



**COPYRIGHT**  
This drawing is the property of Benneta Baroque Pvt Limited. All rights are reserved and the design is based on the condition that any information contained is not copied, reproduced, modified, or submitted to the inspection of any third parties, either wholly or in part without the written consent of Benneta Baroque Pvt Limited. The client has the responsibility to review the design in detail prior to ordering. On ordering it shall be understood that the customer has clearly gone through the drawing and has approved for fabrication.

**BENNETTA**  
Baroque and Sculpture  
1513-1514 Wazir Nagar,  
BSP Marg, New Delhi 110003  
T: +91 11 41550060  
F: +91 11 41550061  
www.benneta.com

Project Title  
**NIGHTCLUB BAR  
PARK HOTEL HYDERABAD, INDIA**

Drawing Ref: VP161_B1.3 Scale: 1:30 @ A1 Date (mm/dd/yyyy): 05/03/2010 Design By: VM For further information on this design please email us at <a href="mailto:enquiries@benneta.com">enquiries@benneta.com</a> or call 011 41550061 ext. 22 Benneta Baroque Pvt Limited 1513-1514 Wazir Nagar, Madhya Pradesh Ph: 011 41550061 ext. 22	Drawing Title: <b>SERVICE AND MECHANICAL DRAWING FOR NIGHTCLUB BAR</b> Design Consultant: BENNETTA Revision Note: Glasswashing Change Beer reserve relocation POS location change Dry cabinet on wall Liquor system, Pour only
--------------------------------------------------------------------------------------------------------------------------------------------------------------------------------------------------------------------------------------------------------------------------------------------------------------------------------------------------------------------------	-------------------------------------------------------------------------------------------------------------------------------------------------------------------------------------------------------------------------------------------------------------------



# OUR VISION & MISSION



HOSPITALITY LUXURY



PRIVATE LUXURY

Infuse

luxury hospitality at premises with our knowhow in bar and wine cellar design.

Improve

hospitality solutions integration with high expectation of top tier patrons.

Create

state of art presence of beverage facilities.





Singapore 2013



150+ confirmed advanced projects



India 2021



# WHO WE ARE





# OUR STORY

## FROM INDIAN ARMY TO INDIAN HOTELS

IT WAS 1988 WHEN MAJOR RK MEHDIRATTA, RETIRED FROM INDIAN ARMY FROM ENGINEERING CORE WHERE HE OVERSAW BUILDINGS CONSTRUCTED AND PROJECTS EXECUTED. IN THE 90s HE LAUNCH THE ENTERPRISE FEMACK, TAKING ON PROJECTS FOR PUBLIC SECTOR INDUSTRIES, AND HOTELS, FOR WATER AUTOMATION AND FIRE FIGHTING SYSTEMS.

VICKRAM, JOINED THE ENTERPRISE IN MID 90s, AND WAS ENGAGED EXCLUSIVELY INTO HOSPITALITY SEGMENT CREATING AN ARM OF INTRODUCING CONTEMPORARY ENGINEERED PRODUCTS FROM EUROPE AND THE US.

A NEW ARM HOTELIARE TECHNOLOGIES, LAUNCHED MANY A BRANDS TO COME, AND WITHIN FEW YEARS WAS SUCCESSFUL IN SETTING

## FROM DISTRIBUTOR TO CONSUMER RETAIL

UP ADVANCED INSTALLATIONS FOR HOTELS AS ITC WELCOMGROUP, THE IMPERIAL, TAJ HOTELS, THE PARK HOTELS, DEGUSTIBUS HOSPITALITY.

FROM 2000, TO 2020 THE BUSINESS UNDER BANNER OF BENNETA COMPLETED HUNDREDS OF PROJECTS IN NEARLY EVERY HOTEL CO, AS WELL AS DISTRIBUTED TO HUNDREDS OF ACCOUNTS FOODSERVICE SOLUTIONS.

THE COMPANY OVER 20 YEARS, EVOLVED ITS VISION BEYOND MANUFACTURERS REP TO A PROFESSIONAL DESIGNER IN BEVERAGE & BAR; IMPORTER, EXPORTER. IN LATE 2000 WE TIED UP WITH HILKNIGHTLY PTE LTD SG, ADDING MORE MARKETS AND RANGE TO INDIA WITH HILKNIGHTLY INDIA PVT LTD.



# HISTOGRAM



(L) 1990s, joining family business in electronics.

(R) Expanding into Hospitality industry in partnership with Glastender, with our first installations at The Imperial and ITC Hotels. Vickram with Todd M Hall in early 2002.



(L) Glastender factory visit for training in mid 2004 with Jon D. Hall (Chairman), and Todd Hall (VP), of family business.



(T) Visitations to Park Sheraton for Bar and Beer System installation.  
(L) Collaboration with La Sommeliere, with Eric Paya (Director) 2008

(T) With Glastender team coordinating our projects (2014)  
(R) Ashley Wickramasinghe, Director Finance, and Project Team, Vaibhav Jain, and Roshan Kumar.







Tech Team



Farah Ahmad



Sumit Mannan



Deepak Wadhwa

## GROWTH

HILKNIGHTLY WAS SUPPORTED BY VARIOUS MEMBERS OF OUR TEAM OVER THE YEARS, CONTRIBUTING TO OUR ABILITY OF MEETING VARIOUS DEMANDS, COMMITMENTS AND RESPONSIBILITIES.

EACH PLACED THEIR EFFORTS FROM CUSTOMER SERVICE, TO ON SITE SUPPORT.

### Others

1. Dipin Nandan
2. Ekta Ahuja
3. Jai Prakash
4. Jimmy
5. Abdul
6. Sudarshan Singh
7. Vaibhav Jain
8. Roshan Kumar





National ID: 817159535876  
PAN No.: AFPPM4020A  
Passport: K7697775  
DIN: 01943418  
DOB: 12/1975  
Education: Mount St. Mary's

# FOUNDER

Vickram Mederata

STARTING HIS CAREER IN FAMILY BUSINESS WITH HIS FATHER, COL. RK MEDERATA, AN ENGINEER AND EX-MILITARY, MANUFACTURING INSTRUMENTATION CONTROL SYSTEMS, VICKRAM EXPANDED THE LINE INTO HOSPITALITY FACILITIES IN PARTNERSHIP WITH **GLASTENDER, INC.**, 1997.

HE ENDEAVORED EXTENSIVE TRAININGS AND CERTIFICATIONS IN BEVERAGE AUTOMATION, FACILITY DESIGN FROM LEADING GLOBAL BRANDS IN MANUFACTURING, DESIGN AND INSTALLATION OF BAR, AUTOMATION, AND BEVERAGE CONTROL SYSTEMS.

RESULTANT WERE INTERNATIONAL PROJECTS, SOME OF WHOSE NAMES WOULD BE LISTED AHEAD. HIS STRENGTH LIES IN-DEPTH TECHNICAL KNOWHOW OF HOW BEVERAGE SYSTEMS WORK PERFECTLY.

VICKRAM'S CONTRIBUTION TO THE INDIAN INDUSTRY WAS INTRODUCTION OF ADVANCED BAR SYSTEMS, AND TRAINING FACILITY PLANNERS INITIALLY AS WE INSTALLED NEW PROJECTS FROM 2000. THIS SET THE STANDARD FOR FUTURE INDUSTRY TO DESIGN BARS, WHICH THEY WORKED ON EARLIER.



# REVIEWS



*ONE OF THE BEST , BEVERAGE FACILITY PLANNER AND EXECUTION EXPERT QUALITY PRODUCTS , POST SALE SERVICE IS FIRST NOTCH GREAT ATTITUDE , KEEPS HIS PRODUCT LINE CONTEMPORARY AND ENERGY EFFICIENT. CERTAINLY, A GOOD CHOICE TO DO BUSINESS WITH.*

**GAUTAM ANAND**

Exec. Vice President -2017  
ITC Hotels Limited

*SO FAR THE BEST BAR EQUIPMENT IN ASIA!!!!!! SINCERELY  
GIANCARLO MANCINO [WWW.GIANCARLOBAR.COM](http://WWW.GIANCARLOBAR.COM)*

**GIANCARLO MANCINO**

Consultant – Taj Hotels (Ice Bar)  
Founder, Mancino Vermouth

*I AM VERY IMPRESSED WIT WITH HOW THINGS HAVE TURNED OUT AND RECOMMEND WORKING WITH VICKRAM ANY TIME. I MUST ADD GLASTENDER IS A GREAT PRODUCT, BUT WITHOUT VICKRAM, IT WILL NOT WORK AS WELL. AS A CLIENT I NEED THE RIGHT GUIDANCE.*

**BABA CHANDOK**

Managing Director  
Sanctum Bar, Chancery Pavilion Hotel

*THIS IS THE SECOND UNIT THAT YOU HAVE INSTALLED IN TWO OF MY HOTELS. I AM EXTREMELY DELIGHTED BY THE PROFESSIONALISM SHOWN BY YOU AND YOUR TEAM RIGHT FROM THE START THEN WE FLOATED THE QUERY AND TILL THE TIME YOU INSTALLED THE MODULAR BAR SYSTEM WITH REMOTE DRAFT BEER AND SODA SYSTEM OF GLASTENDER. AS ALWAYS YOUR AFTER SALES SERVICE IS VERY RESPONSIVE AND WE APPRECIATE THIS*

*MORE SO BECAUSE WE ARE BASED IN ANOTHER COUNTRY – SRI LANKA*

**MANOJ MATHEW**

GM, Taj Hotels, Sri Lanka (Past)



*VICKRAM MEDERATA'S FOCUS HAS BEEN ON GAINING THE EXPERIENCE NECESSARY TO DUPLICATE OUR HIGH LEVEL OF BAR DESIGN EXPERTISE FOR HIS CLIENTS. VICKRAM'S FACTORY TRAINING HERE IN THE UNITED STATES, AT THE FOOD HOTEL ASIA TRADE SHOW, AND THROUGH MULTIPLE MEETINGS WITH ME IN INDIA HAVE GAINED HIM IMMENSE KNOWLEDGE, BUT MORE...MORE IMPORTANTLY, HIS NOW 17 YEARS OF EXPERIENCE DESIGNING AND INSTALLING BARS HAS GIVEN HIM AN UNRIVALED LEVEL OF BAR DESIGN EXPERTISE.*

**TODD M. HALL**

President  
Glastender, Inc. (USA)





at 372-374 Level 1, MG Road,  
Sultanpur, New Delhi 110030  
RSVP [zone@barzzoni.com](mailto:zone@barzzoni.com)  
WA 9811448777



Come and visit us at VINO BARZZONI showroom. Experience options and discuss your needs.

We work with your architect to suggest the right product for your spaces with design.

Vino Barzzoni store is set to be one of its kind in India, where you build stand out solutions.





[HILKNIGHTLY.COM](http://HILKNIGHTLY.COM) / [BARZZONI.COM](http://BARZZONI.COM)  
[ZONE@BARZZONI.COM](mailto:ZONE@BARZZONI.COM)